



# Milwaukee Kickers 2024 Tournament Book



ONE CLUB BUILT THROUGH COMMUNITY.





# Kohl's Fall Rec **Tournament**

Click here for...

**TOURNAMENT SCHEDULE**  
**& STANDINGS**

Click here for...

**TOURNAMENT RULES**

**Thank you for coming out,  
enjoy the tournament!**



# BETTER WITH



PEPSI, PEPSI COLA and the Pepsi Globe are registered trademarks of PepsiCo, Inc.





# Exceptional care without exception.

When you experience an orthopaedic or sports injury, on or off the field, our team is ready to care for you. Our specialists offer many effective and innovative options, and we offer same-day care at Ortho Now. We'll find a treatment plan that is right for you.

For a sports medicine or orthopaedic specialist near you, visit [froedtert.com/ortho](https://froedtert.com/ortho).

**Proud sponsor of the Milwaukee Kickers**

**Froedtert**



**MEDICAL  
COLLEGE of  
WISCONSIN**





Find all the gear you need  
for a winning season  
at Kohl's and Kohls.com



| adidas

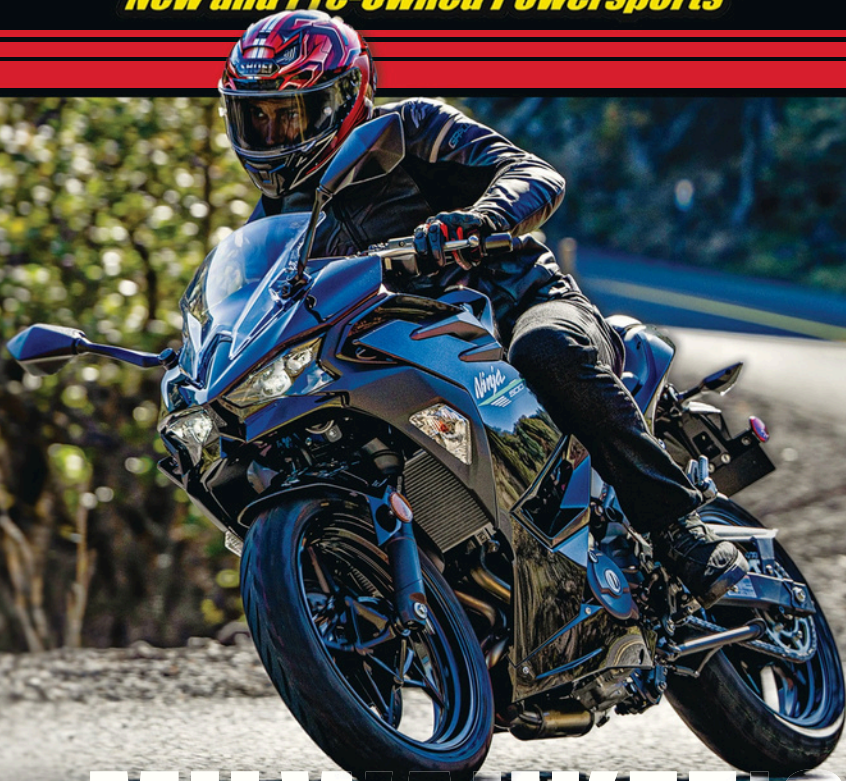


**KOHL'S**

is a proud partner of  
the Milwaukee Kickers.



**SOUTHEAST**  
**SALES.com** MILWAUKEE, WI  
**New and Pre-Owned Powersports**



# MILWAUKEE'S #1 DEALER

**For new and used ATV, four-wheel,  
UTV, side-by-side, motorcycles,  
Honda, and Kawasaki**

6930 NORTH 76TH STREET  
MILWAUKEE, WI 53223  
414-463-2540

**SCAN TO SEE  
OUR INCREDIBLE  
INVENTORY!**



**NOW SERVING**



**IN CONCESSIONS**

**TURKEY BREAST**

TURKEY BREAST, LETTUCE, ONIONS, TOMATOES

**HAM & PROVOLONE**

HAM, PROVOLONE, LETTUCE, ONIONS, TOMATOES

**VEGGIE**

PROVOLONE, SPRING MIX, CUCUMBERS,  
GREEN PEPPERS, ONIONS, TOMATOES



**IN-HOUSE  
DIGITAL PRINTING**



**IN-HOUSE  
EMBROIDERY**



**CUSTOM PRODUCT  
SOURCING**



**ONLINE  
COMPANY STORES**

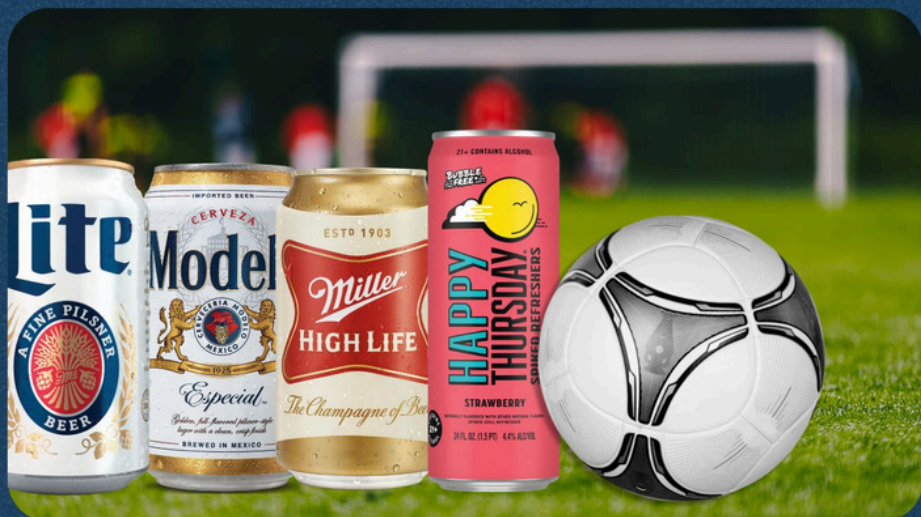


**SKYHIGHMARKETING.COM ■ ■ ■ MARKETING@SKYHIGHMARKETING.COM**

**BEER CAPITOL**

DISTRIBUTING  
MILW.

DELIVERING EXCELLENCE AND TASTE



**Beer Capitol Distributing the official  
distributor of Milwaukee Kickers.**





visual image photography

The official photographer of the Milwaukee Kickers  
plus over 60 more soccer leagues in Wisconsin & Illinois!

Download images from Kickers events at:

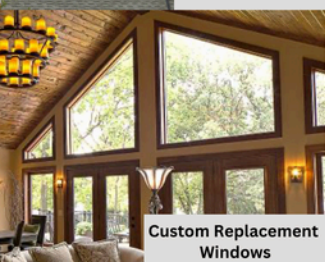
**www.vipis.com**



Roof Replacement



Premium Vinyl Siding



Custom Replacement Windows



Bath and Shower Upgrades

**100% woman-owned and family-operated**



**EXTERIOR PROS**

EXTERIORS & BATHS


*Your Trusted Partner  
in Home Improvement!*

**262-456-3530**

**www.extpros.com**







# STUDENT Checking

Enjoy the freedom of having your own Checking account that travels with you. The Student Checking Program is exclusively for students ages 14-26.



STOP BY A BRANCH NEAR YOU  
OR VISIT US ONLINE TODAY!

[wsbonline.com](http://wsbonline.com) | 414.761.1000

SCORECARD®



EQUAL HOUSING  
LENDER NMLS#407327

To be eligible for the WaterStone (WSB) Student Checking Program, you must be enrolled in high school or college, be between the ages of 14-26 and show student ID issued by school or college. Bank discretion for home school, online, and/or other student enrolled programs. If you are under the age 18, a parent or guardian will need to be joint owner on the account. Only one WaterStone Bank program can be tied to an account. E-statements will be required for the account. No-fee Overdraft Protection benefit requires an additional WSB deposit account owned by student with funds sufficient to cover the overdraft items. A debit card is included with the program and will be offered at no cost to the student. ScoreCard Reward promotions will be periodically offered for purchases made with WSB Debit Card. The first 8 ATM withdrawals per statement cycle will be covered by WSB and the fee assessed at the machine will be refunded to your WSB checking account within two business days. ATM withdrawals in excess of 8 in your cycle are subject to fees charged by the ATM owner. A statement cycle may be from the 17th (a calendar day) of a month to the 16th (a calendar day) of the next month. Free checks will be provided by WSB. This benefit does not include reimbursement of other check designs you previously purchased or plan to purchase. The College Real Rewards Credit Card is subject to credit approval and is an optional benefit for the Student Checking Program. WSB employees, agents of WSB and affiliates are not eligible. Children of WSB employees are eligible. WaterStone Bank (WSB) offers foreign currency exchange services of more than 50 currencies at four WSB locations: Franklin, Oak Creek/27th St, Wauwatosa/State St, and Waukesha. Fees will be waived for Student, MVP and HERO program customers up to two times annually. The currency exchange rate used at WSB may differ than the daily rate of exchange and are subject to daily fluctuations. A \$10.00 fee is assessed for orders and return orders; fee is subject to change at any time. Currency orders placed and not picked up within 10 business days are subject to a return fee and any depreciation. Please see a WSB banker for more details. Program subject to change without notice, see disclosure for details.





Come Score at

**MCDONALD'S**

**GO KICKERS!**

**7130 North 76th Street**  
**.3 miles away**



**MAK  
MEALS**

SEE YOUR PARKING PASS FOR A SPECIAL DEAL FROM

# HAVENWOODS

## TAPROOM & BEER GARDEN

- 20 ROTATING CRAFT BEERS
- CURATED SELECTION OF WINE
- NON-ALCOHOLIC OPTIONS
- .25 MILE WALKING TRAIL
- OUTDOOR PATIO
- LIVE MUSIC
- AND MORE!



**2.6 MILES FROM UIHLEIN SOCCER PARK**

**Proud Sponsor of the Milwaukee Kickers**

**Kwik  
TRIP**



**We've got  
you covered!**

Available on the  
App Store

GET IT ON  
Google Play

WE MAKE, SHIP, AND SELL YOUR FAVORITE ESSENTIALS!

**Big BUDDY**

**Don'tz**

**POTHOLE**  
FIX

**ADIRONDACK**  
MOUNTAIN

**Nature's**  
Touch

**KITCHEN**  
CRAVINGS

**THE**  
KWIKERY

**CLAYTON'S**  
SMITH

**URGE!**

**karuba**





# A WORLD OF *Your Own*

Set the rest of the world aside and step into the Wilderness. Because when you're experiencing any one of our eight waterparks or countless attractions, the only world that matters is the one shared between you and your family. It's **A BEST DAY EVER** kind of world.



WILDERNESSRESORT.COM | 800.867.9453 (WILD) | [f](#) [t](#) [p](#) [@](#)

Wilderness Hotel | Glacier Canyon Lodge | Wilderness on the Lake | Sundara Inn & Spa  
Wild Rock Golf Club | Take Flight Adventure Ride

## THE ULTIMATE FLYING RIDE



Experience the only fly ride of its kind in Wisconsin Dells! Feel the sensation of flight as your feet dangle and your seat rolls, dips and glides in front of a GIGANTIC 65' wide x 48' tall domed screen!

**TakeFlightWilderness.com**

WEB + SOCIAL

VIDEO





# LA PREFERIDA<sup>®</sup>



## HERE WE GO KICKERS!

**WISHING YOU  
A SUCCESSFUL  
2024 SEASON!**

[www.lapreferida.com](http://www.lapreferida.com)

Chicago, Illinois

800 - 621 - 5422

# DISCOVER THE NORTH SHORE OF MILWAUKEE

*Tap the Possibilities!*



GLENDALE • BROWN DEER • RIVER HILLS • BAYSIDE  
FOX POINT • WHITEFISH BAY • SHOREWOOD

TOP ATTRACTIONS, ENTERTAINMENT, SIGNATURE EVENTS,  
SHOPPING, FAMOUS STOPS, DELICIOUS RESTAURANTS, GREAT  
PARKS & TRAILS, EVENT VENUES, HOTELS, AND SO MUCH MORE!

## TAP THE POSSIBILITIES IN MILWAUKEE'S NORTH SHORE



**STAY IN ONE OF OUR 7 GLENDALE HOTELS  
AND MAKE YOUR STAY & EXPERIENCE MEMORABLE.  
STAY IN GLENDALE AND ENJOY ALL THE NORTH SHORE OF  
MILWAUKEE HAS TO OFFER...**

**DISCOVERTHENORTHSHOREMKE.COM**

## THE NORTH SHORE CHAMBER OF COMMERCE MILWAUKEE



OUR MISSION IS TO MAKE MILWAUKEE'S  
NORTH SHORE THE BEST PLACE TO DO  
BUSINESS AND PROSPER. WE ARE A  
CHAMBER ORGANIZATION **DESIGNED BY  
AREA BUSINESSES...FOR LOCAL  
BUSINESSES IN THE NORTH SHORE AND  
BEYOND.** WE PROMOTE ECONOMIC  
GROWTH AND PROSPERITY OF OUR  
BUSINESS COMMUNITY THROUGH  
ADVOCACY, COLLABORATION,  
EDUCATION, AND NETWORKING.



[BIT.LY/NORTHSHORECHAMBEROFCOMMERCE](http://BIT.LY/NORTHSHORECHAMBEROFCOMMERCE)



# MIKRO SOCCER

A FUN INTRODUCTION TO THE GAME OF SOCCER FOR BOYS & GIRLS AGES 3-6



VISIT [WWW.MKSC.ORG](http://WWW.MKSC.ORG) FOR MORE INFORMATION



**CROWN TROPHY**  
NATIONALLY KNOWN, LOCALLY OWNED

**CROWN TROPHY SHEBOYGAN COUNTY**  
3124 Wilgus Ave. Sheboygan, WI, 53081  
TEL: 920-452-2500 FAX: 920-452-2555  
EMAIL: [Crownssheboygan@gmail.com](mailto:Crownssheboygan@gmail.com)  
[www.crowntrophy.com/store-144](http://www.crowntrophy.com/store-144)

**CROWN  
EXCLUSIVE**

**GREAT  
VALUE!**



- Insert Trophies
- Column Trophies
- 100's of activities

**TROPHIES**



**Dog Tags**

**MEDALS**



**Laser  
Engraved  
Crystal**

**Crystal  
Sport  
Balls**

**CRYSTAL**

Serving Our  
Community For  
Over 35 Years,  
America's # 1  
Award Supplier

**MIRROR  
TROPHIES**



**Graystone  
Light-Up  
Action**

**Sport Cup  
Trophies**

**SOCCER  
TROPHY**

**SCULPTURES**



**Great For  
Coaches,  
Players,  
& Teams**

• Sports Plaques  
• Sports Engraved Frames

**PLAQUES**

# Soccer Awards

ON TIME DELIVERY  
EXCLUSIVE CROWN PRODUCTS  
OUTSTANDING CUSTOMER SERVICE





# ONE CALL... THAT'S ALL!

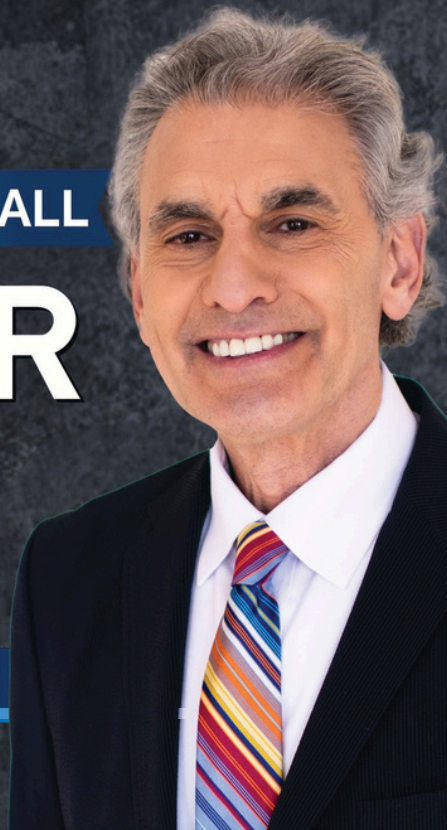
ONE CALL  THAT'S ALL

# GRUBER

LAW OFFICES LLC

ACCIDENTS | INJURIES

[gruber-law.com](http://gruber-law.com)



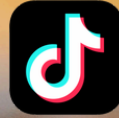


Partnering with America SCORES Milwaukee to ensure  
***all children*** have a team to play on.



America SCORES Milwaukee's mission is to inspire urban youth to lead healthy lives, be engaged students, and have the confidence and character to make a difference in the world. [AmericaSCORESmke.org](http://AmericaSCORESmke.org)





**THANK YOU TO OUR HOST**



**Home of the Milwaukee Kickers!**

